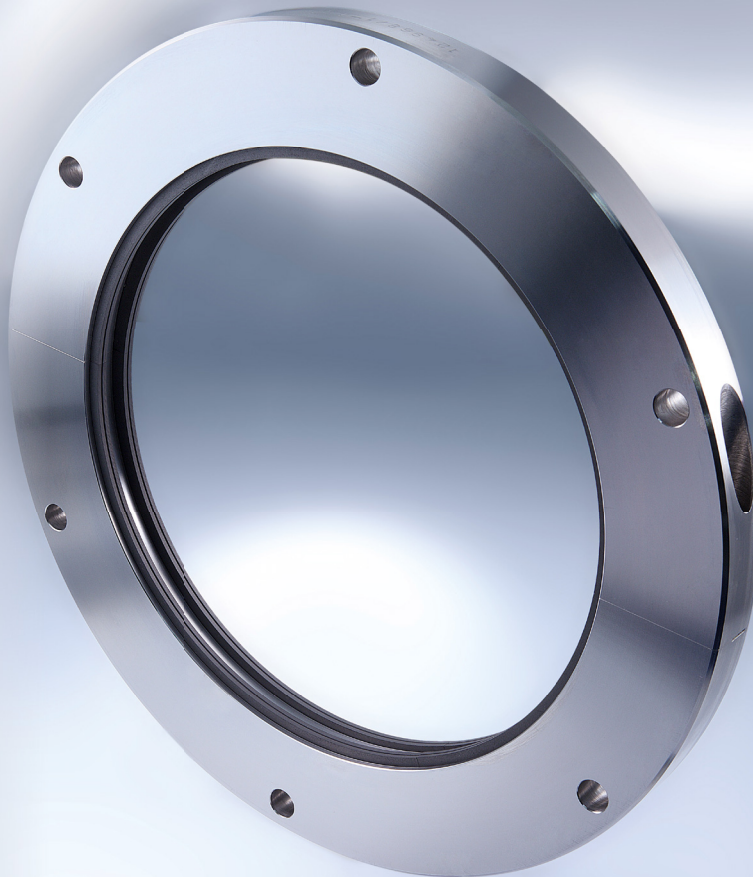


Be on the safe side – sealing system
for shaft feed throughs in vessels

EagleBurgmann[®]
Rely on excellence

Bulkhead seal Espey WDK-BHS



- **Easy installation and dismounting – housing and seal rings split**
- **Verified leakage rates**
- **Maintenance-free**
- **Economical**
- **International type approvals**
- **Short installation length**

Operating conditions

Shaft diameter: 40 ... 800 mm (1.57" ... 31.5")
Pressure eff.: max. 3 bar (44 PSI)
Temperature: max. 225 °C (437 °F)
Sliding velocity: max. 40 m/s (131 ft/s)
Radial play: max. 5 mm (0.2")
Axial movement shaft: theoretically unlimited
Angular deviation: max. 2°
Leakage rate at
d= 100 mm (3.94"): 0.195 l/min
d= 320 mm (12.60"): 0.885 l/min
d= 800 mm (31.50"): 2.385 l/min
d= shaft diameter



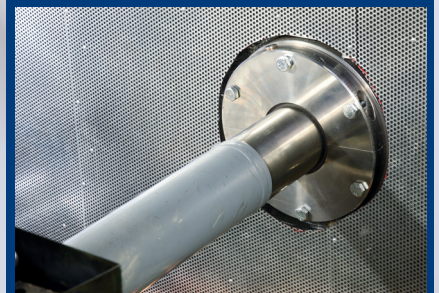
Espey WDK-BHS



(Hochsee-)Schlepper / (Offshore) tug boat



Arbeitsschiff / Work boat



Espey WDK-BHS, assembled at bulkhead

EagleBurgmann Espey GmbH
Thomas Edison-Strasse 19
47445 Moers / Germany

Phone +49 2841 99827 0
Fax +49 2841 99827 56

info.espey@de.eagleburgmann.com
www.eagleburgmann-espey.com